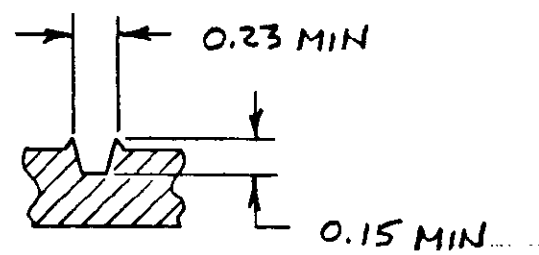
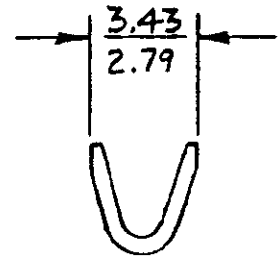
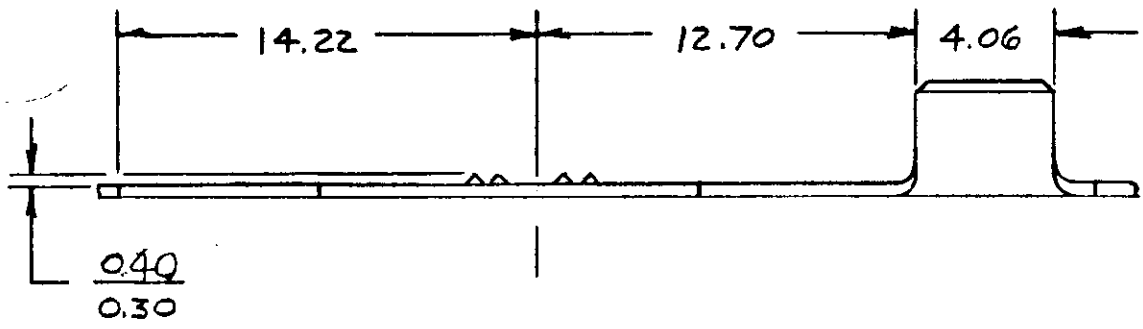
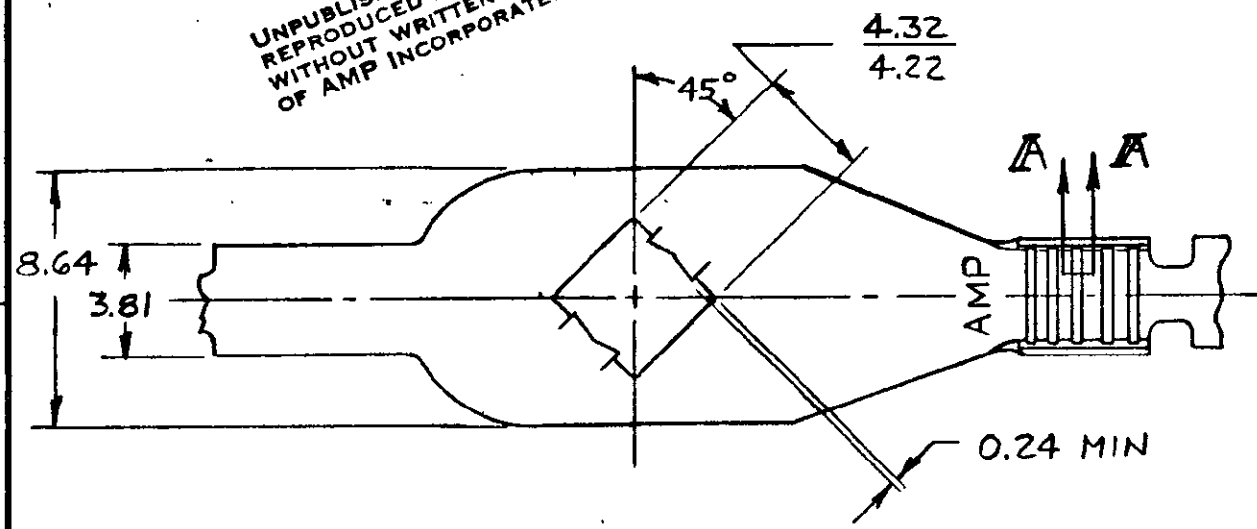


© COPYRIGHT 1977 BY AMP INCORPORATED, HARRISBURG, PA.
 ALL INTERNATIONAL RIGHTS RESERVED. AMP INCORPORATED PRODUCTS
 COVERED BY U. S. AND FOREIGN PATENTS AND/OR PATENTS PENDING.

UNPUBLISHED COPY
 REPRODUCED FOR PUBLICATION
 WITHOUT WRITTEN PERMISSION
 OF AMP INCORPORATED.



SECTION A-A
 TYP. SERRATION

METRIC

| | | REVISIONS | | | | |
|---|---|-----------|----------------|--------------------------|------------------------|----------|
| P | F | ZONE | LTR | DESCRIPTION | DATE | APPROVED |
| ✓ | ✓ | | O | REL. NEW DRAWING | M-4487 10/12/77 | DAS/ |
| ✓ | ✓ | | A | REVISED | M-4692 2/27/78 | DAS/D.H. |
| ✓ | ✓ | | B | Added - 2 | M-4721 3/10/78 | DAS/D.H. |
| ✓ | ✓ | | C | REVISED & REUSED | M-4759; M-4763 4/11/78 | EW/D.H. |
| ✓ | ✓ | | D | REVISED | M-5395 4/24/79 | DAS/CLW |
| ✓ | ✓ | | E | REVISED | M-5434 7/25/79 | DAS/EWP |
| ✓ | ✓ | | F | ADDED "AMP" STAMP | M-5499 9/24/79 | DAS/D.H. |
| ✓ | ✓ | | G | RMD REST. NOTE | M-5548 7/17/79 | DAS/EW |
| ✓ | ✓ | | H | Added SECT. A-A | M-6405 4/22/81 | DAS/D.H. |
| ✓ | ✓ | | H ₁ | RESTORATION | 5-23-85 | KS/SJ |
| J | | | J | OBSOLETE - 2 PER CM-8608 | 5-26-81 | PKC |
| | | | K | REV PER 0710-0427-95 | 24/SEP/95 | PmE |

| | | |
|--------|------------------|----------|
| NONE | 20-16 AWG MAGNET | 505071-1 |
| FINISH | WIRE RANGE | PART NO |

| | | | |
|---|-------------------------------|-------------------------------------|------------------------|
| UNLESS OTHERWISE SPECIFIED DIMENSIONS ARE IN INCHES. TOLERANCES ON: DECIMALS ± 0.40 ANGLES ± 1° | CONTRACT NO | AMP INCORPORATED Harrisburg, Pa. | |
| | DR 10-12-77 D.A. SALTZER | NAME TERMINAL | |
| MATERIAL 0.50 BRASS | CHK C. M. Saltzer 4/25/77 | STUD RETAINING, AMPLIVAR | |
| FINISH SEE TABLE | APPD C. M. Saltzer 4/25/77 | SIZE B | CODE IDENT NO 00779 |
| | DSGN APPD | DRAWING NO 505071 | |
| | OTHER APPD | SCALE 4:1 | SHEET # |